

Achieving the Dream for Adult Learners

Clair Collins, VP of Enrollment Management & Pathway Success

Dr. Angela Marquez, VP of Diversity, Equity & Inclusion, Chief of Staff



OBJECTIVES

By the end of this session participants will be able to:

1. Be informed of the ATD efforts at CCA.
2. Identify ways to explore Adult Learner data at your institution.
3. Do a gap analysis
4. Brainstorm ways to visualize gaps

Achieving the Dream

Achieving the Dream: What is it?



ATD is National Organization

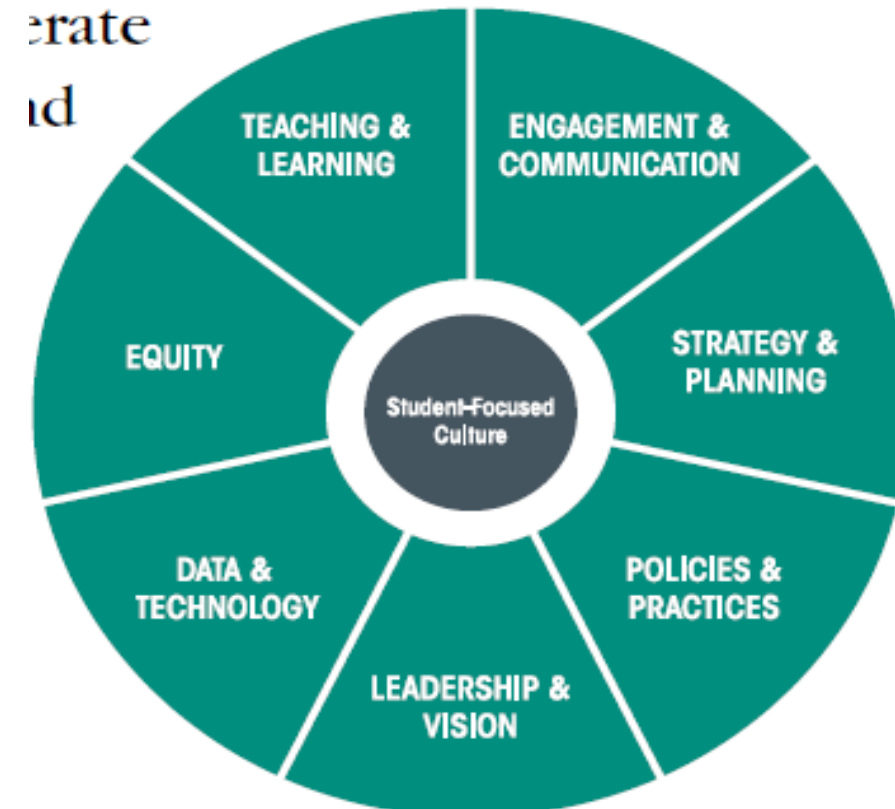
- Network of Colleges committed to Student Success
- 3-year Commitment

Focused on:

- Improving educational outcomes of all students
- Decreasing equity gaps
- Improving the social and economic mobility

Approach:

- Building Foundation for Student Success
- Access to Learning Opportunities, Resources, etc.
- Professional Development
- ATD Coaching/Site Visits
- Benchmarking data
- Networking opportunities

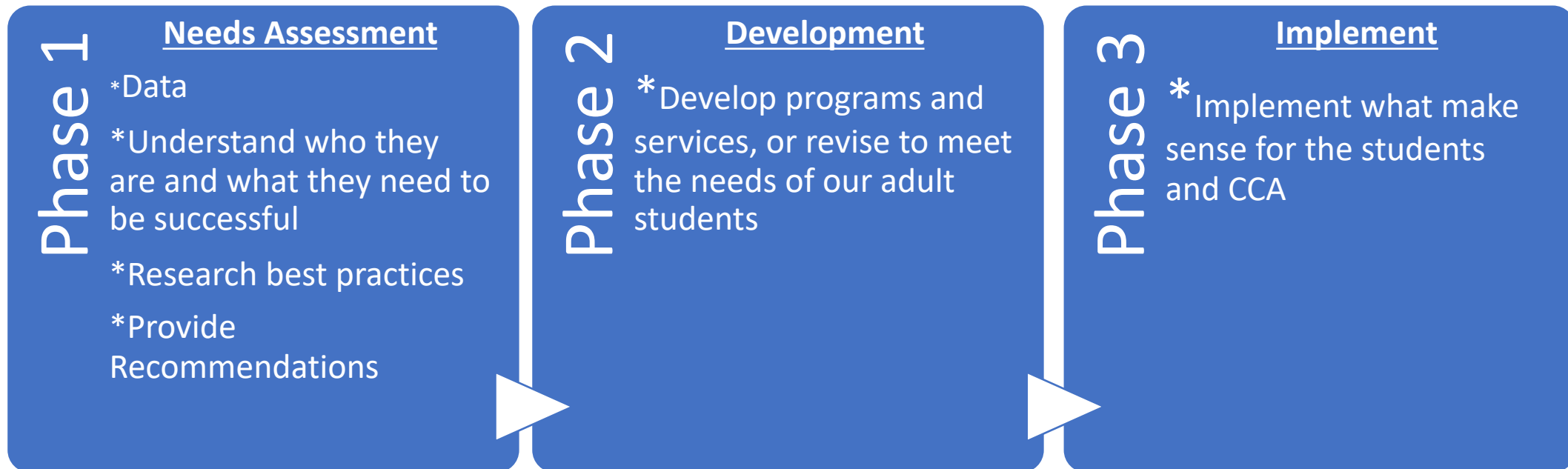


ATD Priority 3: Adult Learners

ATD Priority 3: Develop Tailored efforts, academic programming modalities, and support services that encourage persistence and completion of adult learners (ages 25 and up).

Rationale: Completion Rates for CCA Adult Learners is lower (56% in 2019) than the national rate (62%); 40% of CCA Students are age 25 or older; Adults are unique in their life experience and needs; and 21.2% of Aurora has some college and no degree.

Phased Approach: Needs Assessment, Development, Implement



Adult Learners Know your DATA

CCA Adult Students

Fall 2023 Adult Learner Cohort 1470 Students

| Gender | # of Students |
|--------|---------------|
| Female | 964 |
| Male | 506 |

| Degree Type | # of Students |
|-----------------|---------------|
| Transfer Degree | 710 |
| AGS | 204 |
| Cert. | 190 |
| AAS | 369 |
| Undeclared | 11 |

| White | Hispanic | Black | AA/PI | American Indian | Other/Unknown |
|-------|----------|-------|-------|-----------------|---------------|
| 415 | 406 | 474 | 106 | 37 | 32 |

Who are our Adult Students?



*Transfer credits are defined by your institution. Contact your strategic leader for more details.

Key Populations

Need inspiration? View our [Campaign Ideas Infographics](#) for more details.

Students with Academic Performance Concerns



*Compares each student's last recorded Term GPA to their Cumulative GPA

Students with Academic Progress Concerns



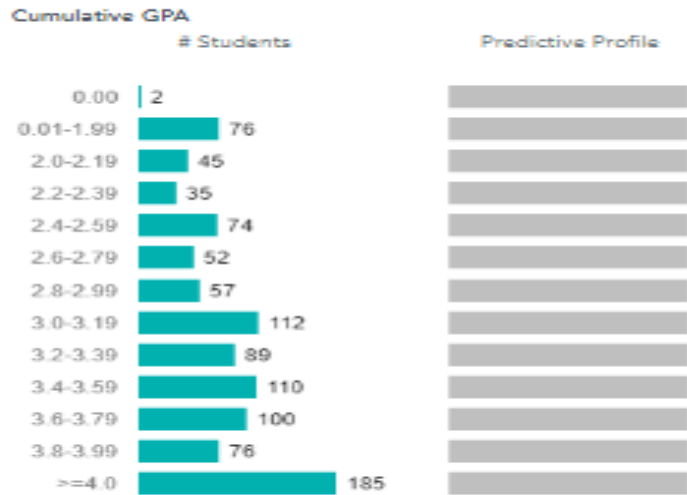
*Percentage calculated using the total number of students who are currently attempting 12 or more credits.

Students with Alerts or Open Cases



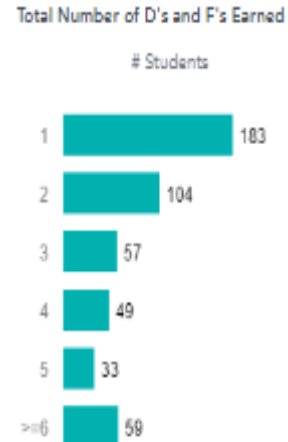
Who are our Adult Students?

GPA Metrics

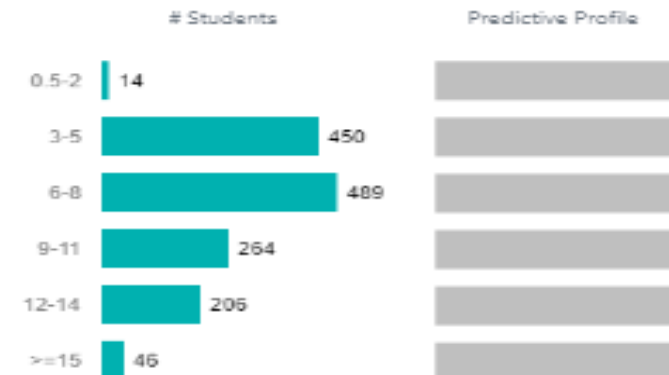


Cumulative GPA may include transfer credits. This setting is configured by your institution. For more information, contact your strategic leader.

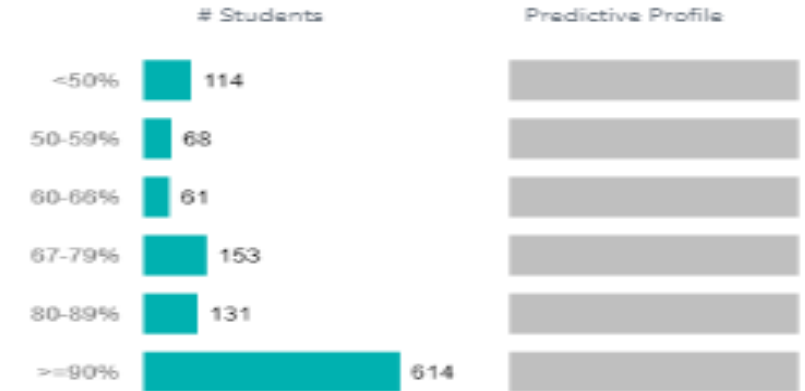
Course Performance



Attempted Credits



Credit Completion Percentages



Do You Know Your Institutional Data?

Time to be a Data Detective!!

Rules for being a data detective:

- A good data detective asks lots of questions
- A good data detective talks to other people about the data they have access to
- A good data detective knows that exploration does not mean “exactness.” “Good” data is good enough. Perfect data does not exist.
- Good data detectives share what they know with others. If you see an interesting trend... Say Something! People love a trend!
- A good data detective knows that sometimes you do a lot of digging and still come up short. That’s ok! Now you know where not to look next time.

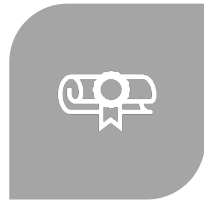
[See Data Detective Worksheet]

Phase 1: Needs Assessment - Mapping Student Lifecycle

Student Lifecycle Defined: This is the entire journey a student takes with the institution from the moment they first show interest to completion and/or post-graduation engagement.



STEP 1
INQUIRY
FIRST SHOW
INTEREST



STEP 2
APPLICATION
SUBMISSION OF
APPLICATION AND
ANY OTHER
SUPPORTING
DOCUMENTS



STEP 3
ENROLLMENT
OFFICIALLY
ADMITTED, ENROLL
IN CLASSES,
FINANCIAL
AID/SCHOLARSHIP,
ORIENTATION



STEP 4
ENGAGEMENT
ATTENDING CLASSES
AND PARTICIPATE IN
ACADEMICS,
PROGRAMS,
ACTIVITIES, CAREER
AND TRANSFER
READINESS



STEP 5
COMPLETION
GRADUATION,
TRANSFER,
CERTIFICATE
COMPLETION



STEP 6
**ALUMNI
ENGAGEMENT** -
SURVEY, GIVING,
ALUMNI MENTORSHIP,
SPEAKERS, ETC.

Overall Findings

Adult Learners at CCA Had High Levels of Belongingness and Community

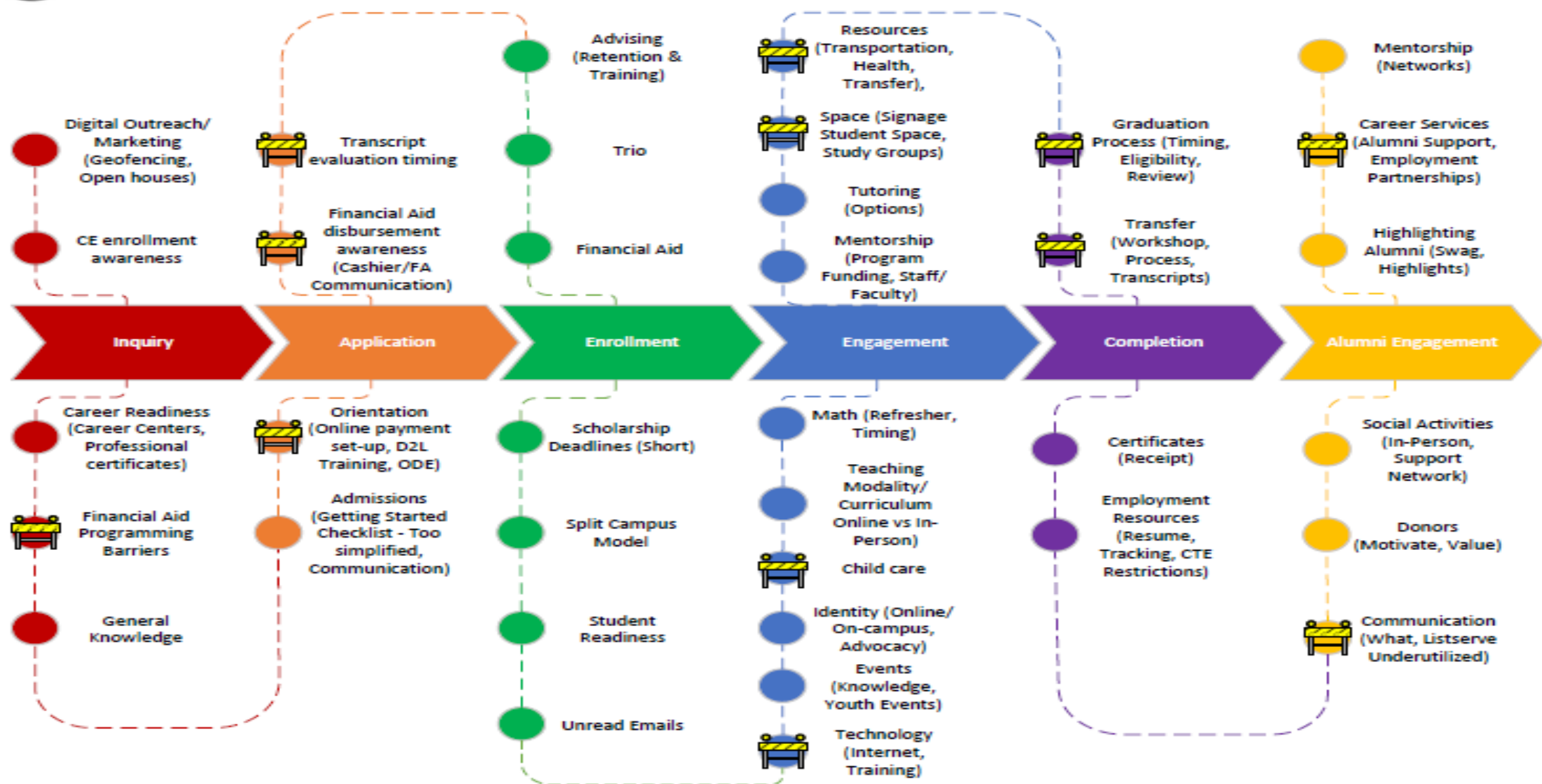
What happens when the barrier isn't internal?

- Look at process.
- Where are we as an institution the problem?
- Where are the barriers and which ones can we help remove?

Based on this, CCA reworked a student lifecycle process map that is unique to adult learners to better visualize next steps and where we believe we can positively impact student success.

ATD Adult Learner Map of Student Lifecycle

Achieving The Dream - Adult Learner Life Cycle Mapping



Next Steps

Find your Data – where is it located?

Determine:

How many adult students you have

Thank you.

For Additional Questions Contact:

Clair Collins
VP of Enrollment Management & Pathways Success
Clair.Collins@ccaaurora.edu

Dra. Reyna Anaya
Senior Student Affairs Officer, Dean of Students
Reyna.Anaya@ccaaurora.edu

Dr. Angela Marquez
VP of Diversity, Equity & Inclusion, Chief of Staff
angela.marquez@ccaaurora.edu



Section Title Text

Header Text

Body Text

- Point 1
- Point 2