



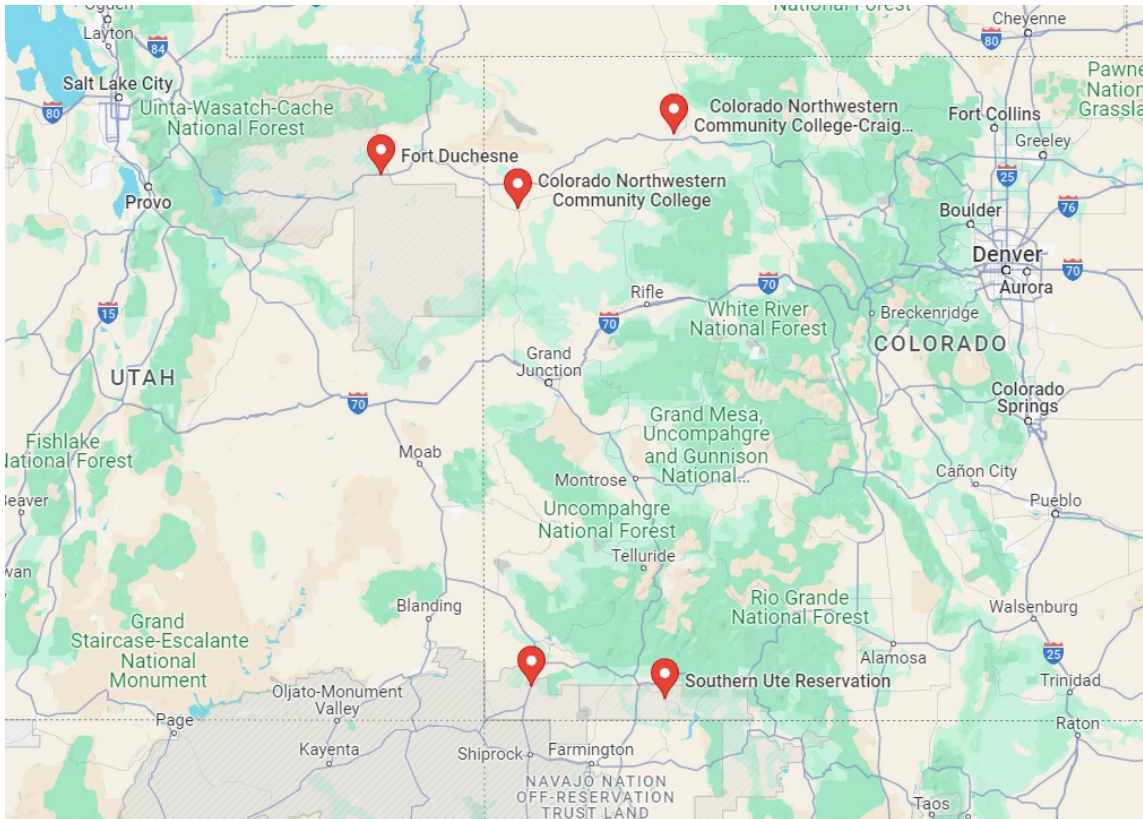
Indigenous Student Engagement Project

Colorado Northwestern Community College

Overview

- ▶ Introduce CNCC and the communities we serve
- ▶ The background and beginnings of our project
- ▶ The goals, resources, and measure of success of the project
- ▶ Out strengths and challenges
- ▶ Outcomes of the project (to date)
- ▶ Time for questions

A Bit about CNCC



- ▶ Two campuses: Rangely and Craig
- ▶ Avg. Total Enrollment 800-1,200 students
- ▶ Southern Ute Indian Tribe, Ignacio, CO
- ▶ Ute Mountain Ute Tribe, Towaoc, CO
- ▶ Ute Indian Tribe, Ft. P.O. Box 190, Fort Duchesne UT 84026, UT

The Beginning



Historic relationships with Indigenous communities in our service area in previous decades



In the last five years increase in student-athlete recruitment from Indigenous communities

The Project

Goal:

- To build respectful and trusting relationships with Indigenous communities in our service area.
- 2% increase in Indigenous student enrollment in Dental Hygiene, Early Childhood Education, and Nursing

Resources:

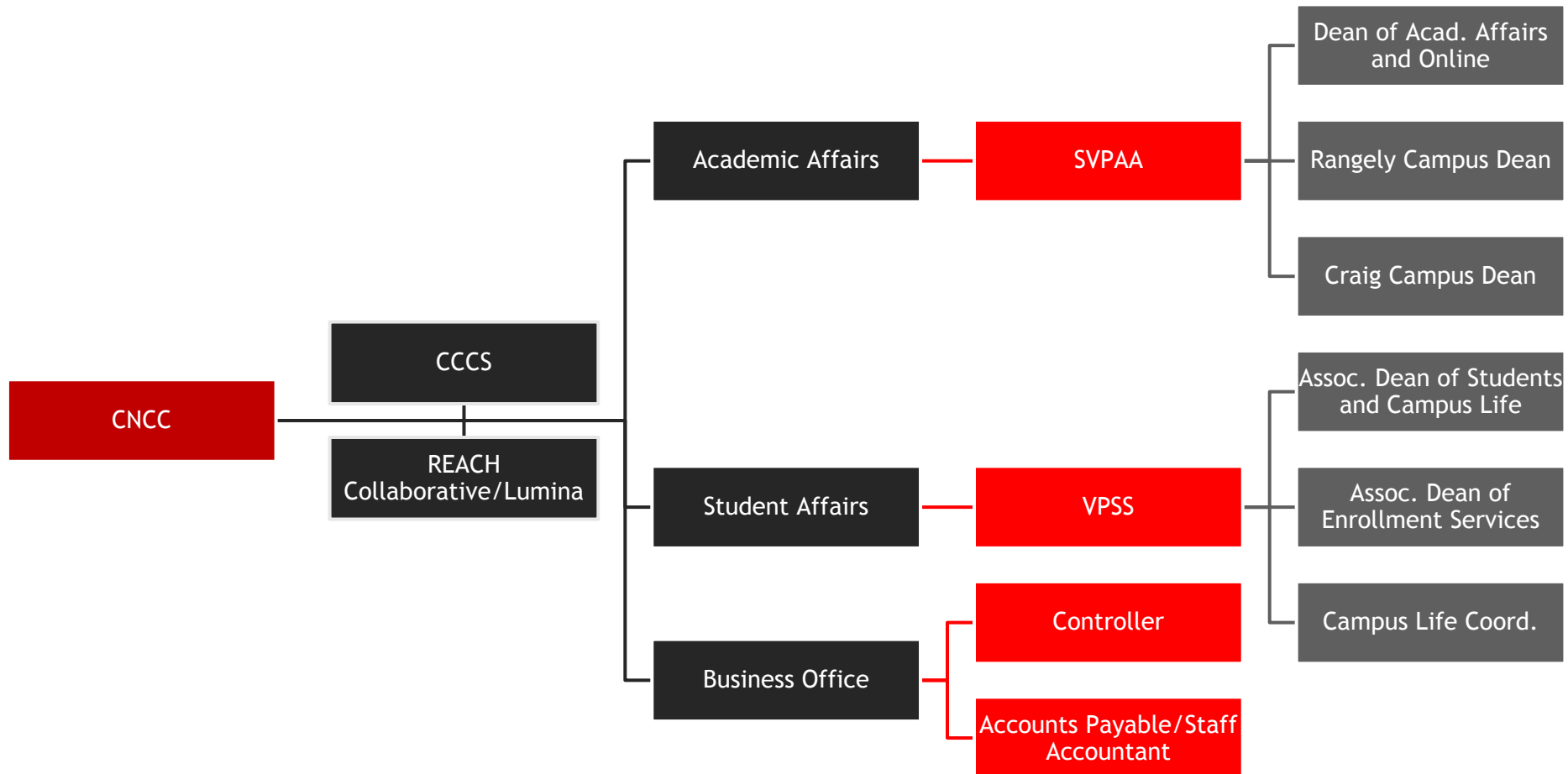
- CCCS: Ayelet Zur Nayberg, Adult Learners' Success Subgrants,
- REACH Collaborative/Lumina Foundation: Dr. Denise Henning and Alli Bell
- PCC: Perry Pepper
- Tribal Communities: LaTitia, Michael, and ShaRay (Southern Ute Tribe Edu Dept), Korin and Ronee (Ute Indian Tribe Edu Depart), and Quinton (Ute Mountain Tribe)

Measures of Success

Begin to build respectful and trusting relationships with the Southern Ute Tribe, Ute Mountain Ute Tribe, and Ute Indian Tribe communities by listening to their needs.

Build respectful and trusting relationships to deliver on programming directed to their community's needs and offer non-credit and credit courses that lead to a pathway of credential attainment.

The Team



Strengths



Genuine and strategic relationship building with community partners.



Learning organization that works to innovate student experiences to improve recruitment and retention.



Provide an intimate learning experience through a small faculty-to-student ratio, dedicated advising staff, athletic programming, and rural community experiences.

Challenges

Lack of existing relationships with the communities

Small Indigenous student population

Indigenous staff/faculty population

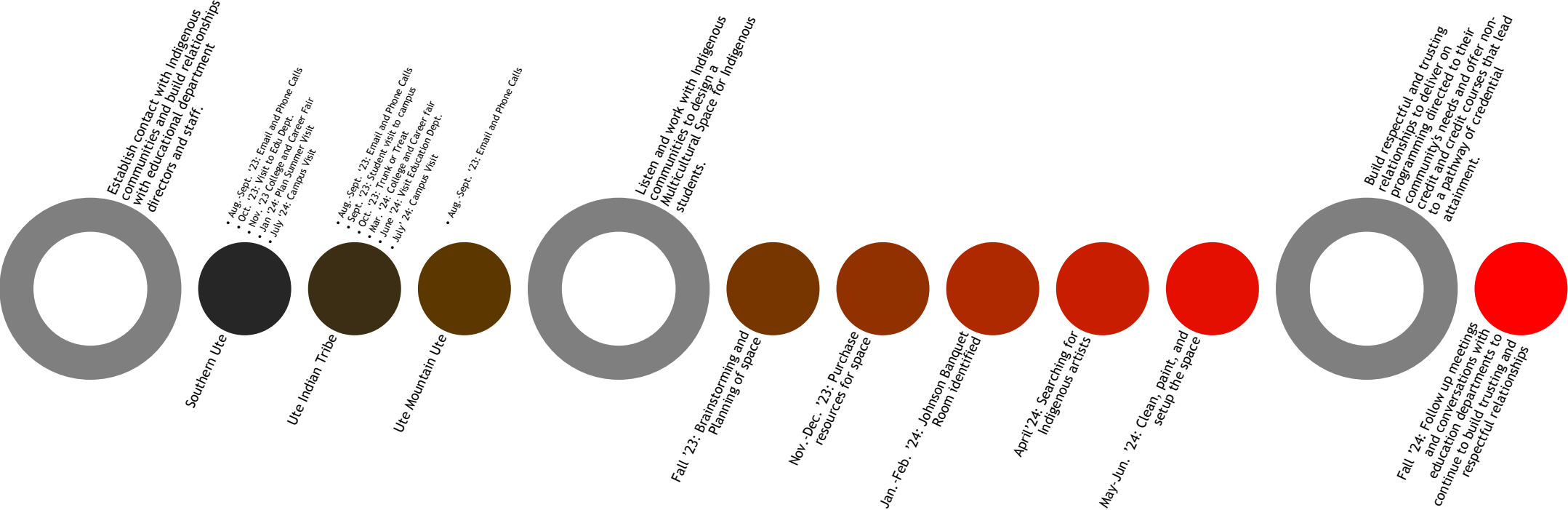
Limited student space and resources

Geographic distance

Patience with time

Limited quantitative deliverables

Basically, We Did...



Questions and Contact

- ▶ Hailee Russell, Controller, hailee.russell@cnc.edu
- ▶ Brett Caskey, Vice President of Student Services, brett.caskey@cnc.edu
- ▶ Keith Peterson, Senior Vice President of Academic Affairs, keith.peterson@cnc.edu
- ▶ Nicholas Swails, Dean of Academic Affairs and Online Learning, nicholas.swails@cnc.edu